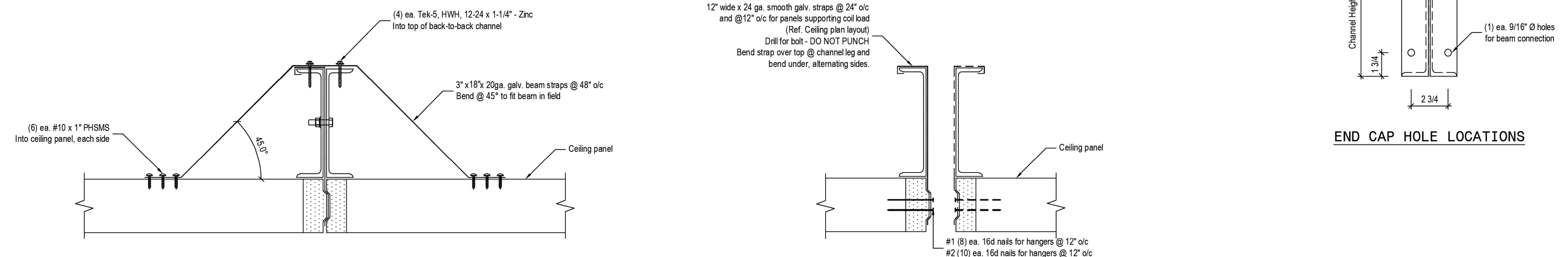
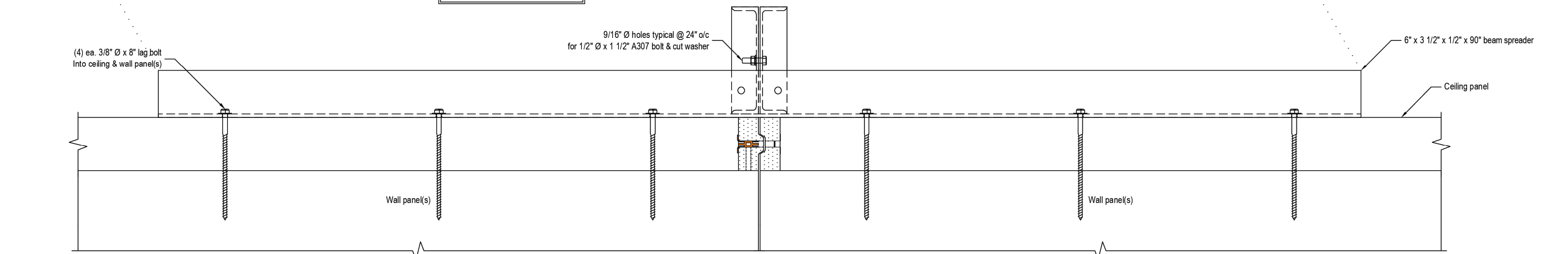


BEAM SPREADER HOLE LOCATIONS

NOTE: Beam spreaders occur at each end of each set of ceiling support back-to-back channels.

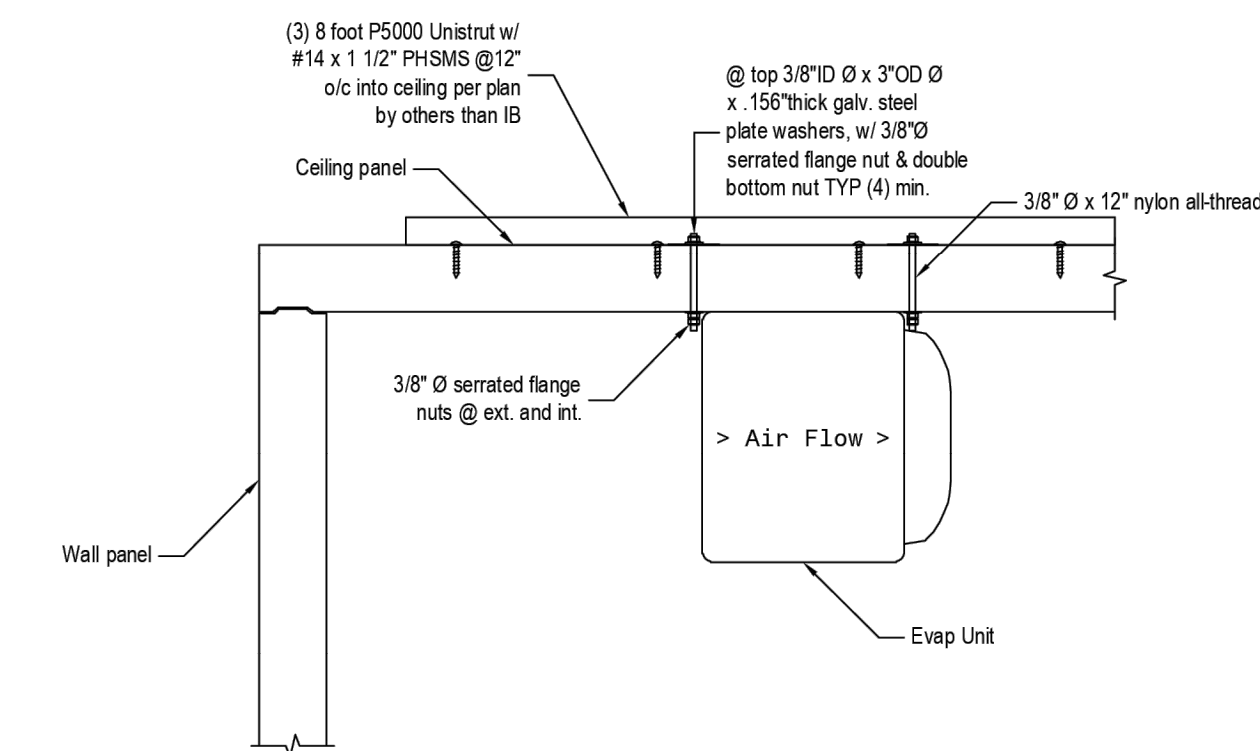


BEAM STRAPS

HANGER STRAPS

NOTE: Hanger straps occur between each set of cam-locks along entire length of joint.

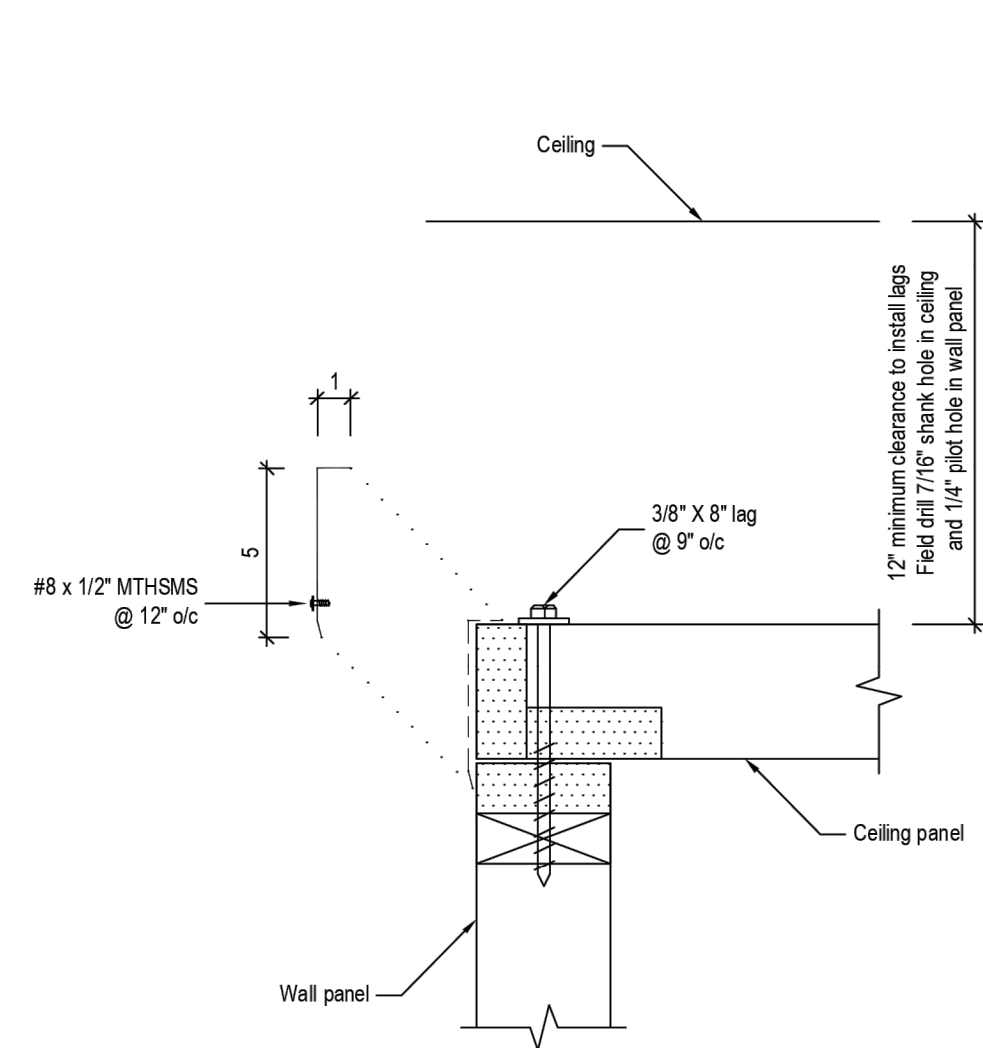
1 BACK-TO-BACK C-CHANNEL CLEARSPAN
4 High Density Ceilings



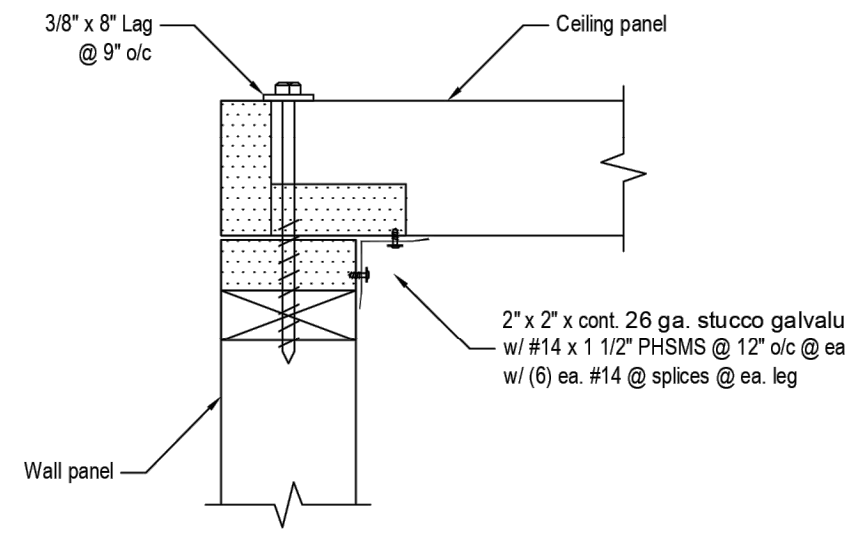
4 LOW PROFILE EVAP HANGER DETAIL W/OVERSIZED WASHER
4 max load 70 lbs per rod

5 NYLON COIL SUPPORT KIT
4

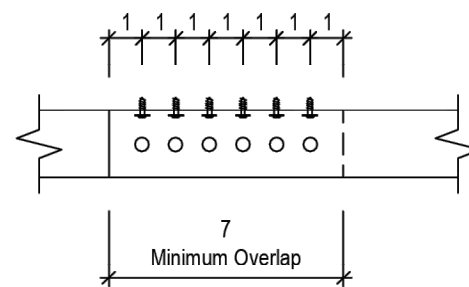
Maximum load 237 LBF Unfactored per Rod
(6) ea. 3/8" ID Ø x 3" OD Ø x .156" thick galv. steel plate washers
(6) ea. 3/8" Ø x 12" nylon all-thread
(12) ea. 3/8" Ø serrated flange nuts
(6) ea. 3/8" Ø nuts



2 LOOSE CEILING CAP & LAG DOWN
4



3 CEILING TIE-DOWN
4

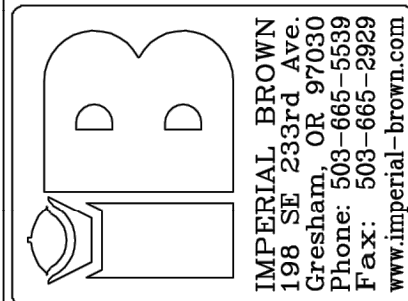


SPLICE DETAIL

25-IB-14381-01

25-IB-14381.000.01-05

FOOD SERVICE DESIGN GROUP
SAN DIEGO, CA
NATIONAL CITY SCHOOL DISTRICT WAREHOUSE
NATIONAL CITY, CA



DO NOT SCALE THIS DRAWING
SCALE: 3/16" = 1'-0"
DATE DRAWN: 1/9/2025
DATE PRINTED: 4/16/2025
BY: Kyle Lewis
CHK'D BY:
DRW#: 25-IB-14381-01
BOX: 1 OF 1
SHEET: 4 OF 6

STAMP



851 N. Hickory Ave, Suite 200 Meridan, ID 83642
(208) 345-8941
web www.tamarackgrove.com
firm #: N/A
Project #: 25-25952



©SGPA 2025

PREPARED FOR THE
BOARD OF EDUCATION
NATIONAL SCHOOL DISTRICT
NATIONAL CITY, CALIFORNIA

FOOD SERVICE WALK-IN FREEZER DRAWING

CENTRAL WAREHOUSE
FREEZER REPLACEMENT

1400 N AVENUE
NATIONAL CITY, CA 91950

ARCHITECTURE
SGPA AND PLANNING

SUBMITTALS / REVISIONS
ISSUE DATE
DSA SUBMITTAL V1 03/19/2025
DSA SUBMITTAL V2 04/30/2025

BID SET 5/1/2025
NOT FOR
CONSTRUCTION
PROJECT STILL IN
REVIEW

PROJECT NO. 2239-E-02
SHEET NO.

K-3.3